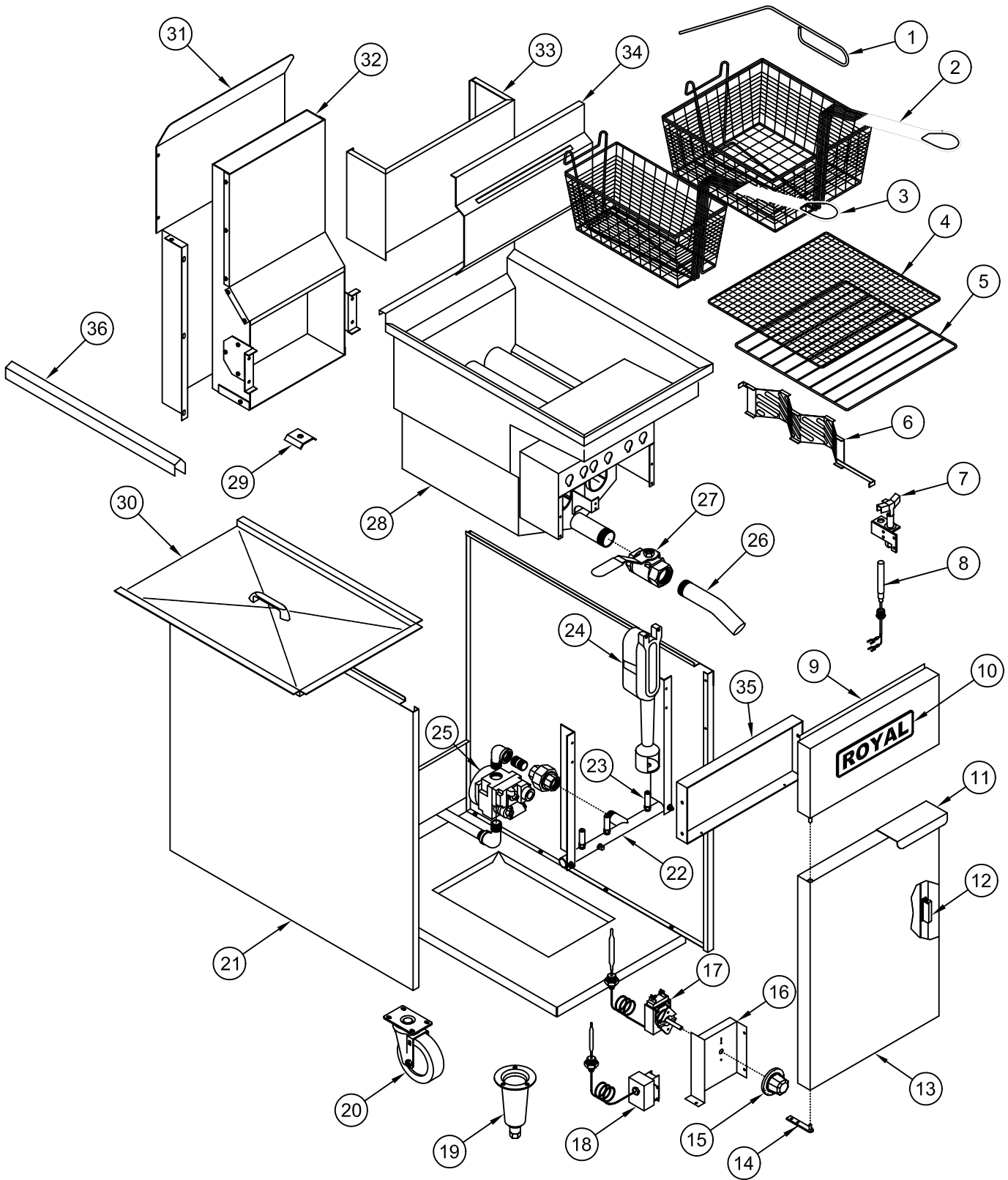
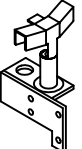

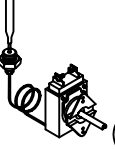

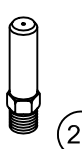


RFT - 50, 60S & 75

Tube Fryer - 50, 60 & 75 lbs.



PILOT	THERMOPILE	THERMOSTAT	HI LIMIT	ORIFICE HOOD
				
7	8	17	18	23

RFT – 50, 60S & 75
Tube Fryer – 50, 60 & 75 lbs.

ITEM NO.	PART NO.	DESCRIPTION
1	3105	Clean out rod (goofer rod)
2	3103	Frying basket 60 lbs. (mid size)
	3104	Frying basket 75 lbs. (large)
3	3100	Frying basket 50 lbs. (small)
4	3106	Crumb screen -fine mesh 75 lbs. (large)
	3107	Crumb screen -fine mesh 60 lbs. (mid size)
	3108	Crumb screen -fine mesh 50 lbs. (small)
5	3004	Crumb screen – regular 75 lbs. (large)
	3005	Crumb screen – regular 60 lbs. (mid size)
	3006	Crumb screen – regular 50 lbs. (small)
6	28021	Diffuser assy. 75 lbs. (large)
	28019	Diffuser assy. 50 & 60 lbs. (small)
7	3231	Pilot burner w/bell orifice (natural gas)
	3232	Pilot burner w/bell orifice (propane gas)
	3207	Pilot bell orifice only (natural gas)
	3206	Pilot bell orifice only (propane gas)
8	3109	Thermopile
9	28205	Front panel 50 lbs
	28406	Front panel 60, 75 lbs
10	2649	Royal logo (Large)
11	1005	Offset Pull Handle (chrome handle)
12	1724	Door magnet
13	28237	Door panel assembly 50 lbs
	28430	Door panel assembly 60, 75 lbs
14	28020	Door hinge assy.
15	3110	Knob thermostat
16	28003	Bracket – thermostat/hi-limit
17	3113	Thermostat
18	3112	Hi-limit switch
19	1219	Chrome cone leg
20	2193	Caster 5” w/brake
	2192	Caster 5” without brake
21	28201	Side outer panel – Right side 50, 60 lbs
	28202	Side outer panel – Left side 50, 60 lbs
	28402	Side outer panel – Right side 75 lbs
	28403	Side outer panel – Left side 75 lbs
22	3227	Manifold pipe 50 lbs. (3 tube)
	3228	Manifold pipe 60, 75 lbs. (4 tube)
23	3201-32	Orifice hood #32 (brass) natural gas, 38,000 BTU
	3202-50	Orifice hood #50 (brass) propane gas, 38,000 BTU
24	3116	Burner (cast iron)

RFT – 50, 60S & 75 (cont.)
Tube Fryer – 50, 60 & 75 lbs.

ITEM NO.	PART NO.	DESCRIPTION
25	3114 3115	Gas valve 3/4" natural gas Gas valve 3/4" propane gas
26	3132	Drain extension pipe 1-1/4 NPT.
27	3133	Drain valve 1-1/4" NPT.
28	28211 28453 28413	Vessel assembly 50 lbs. (small) Vessel assembly 60 lbs. (mid size) Vessel assembly 75 lbs. (large)
29	28005	Probe holder
30	28229 28459 28428	Vessel tank cover 50 lbs. (small) Vessel tank cover 60 lbs. (mid size) Vessel tank cover 75 lbs. (large)
31	28221 28422	Back panel cover 50 lbs. (3 tube) Back panel cover 60, 75 lbs. (4 tube)
32	28236 28429	Flue box assy. 50 lbs. (3 tube) Flue box assy. 60, 75 lbs. (4 tube)
33	28220 28421	Vessel back panel 50 lbs. (3 tube) Vessel back panel 60, 75 lbs. (4 tube)
34	28208 28409	Basket hanger 50 lbs. (3 tube) Basket hanger 60, 75 lbs. (4 tube)
35	28204 28405	Front baffle 50 lbs. (3 tube) Front baffle 60 lbs., 75 lbs. (4 tube)
36	28238 28431	Joiner strip for RFT-50, RFS-40 Joiner strip for RFT-75