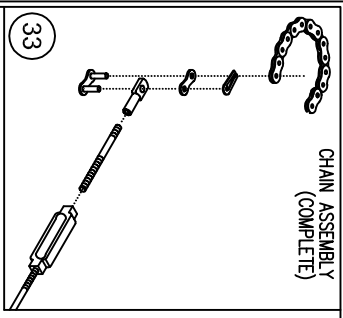
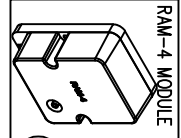
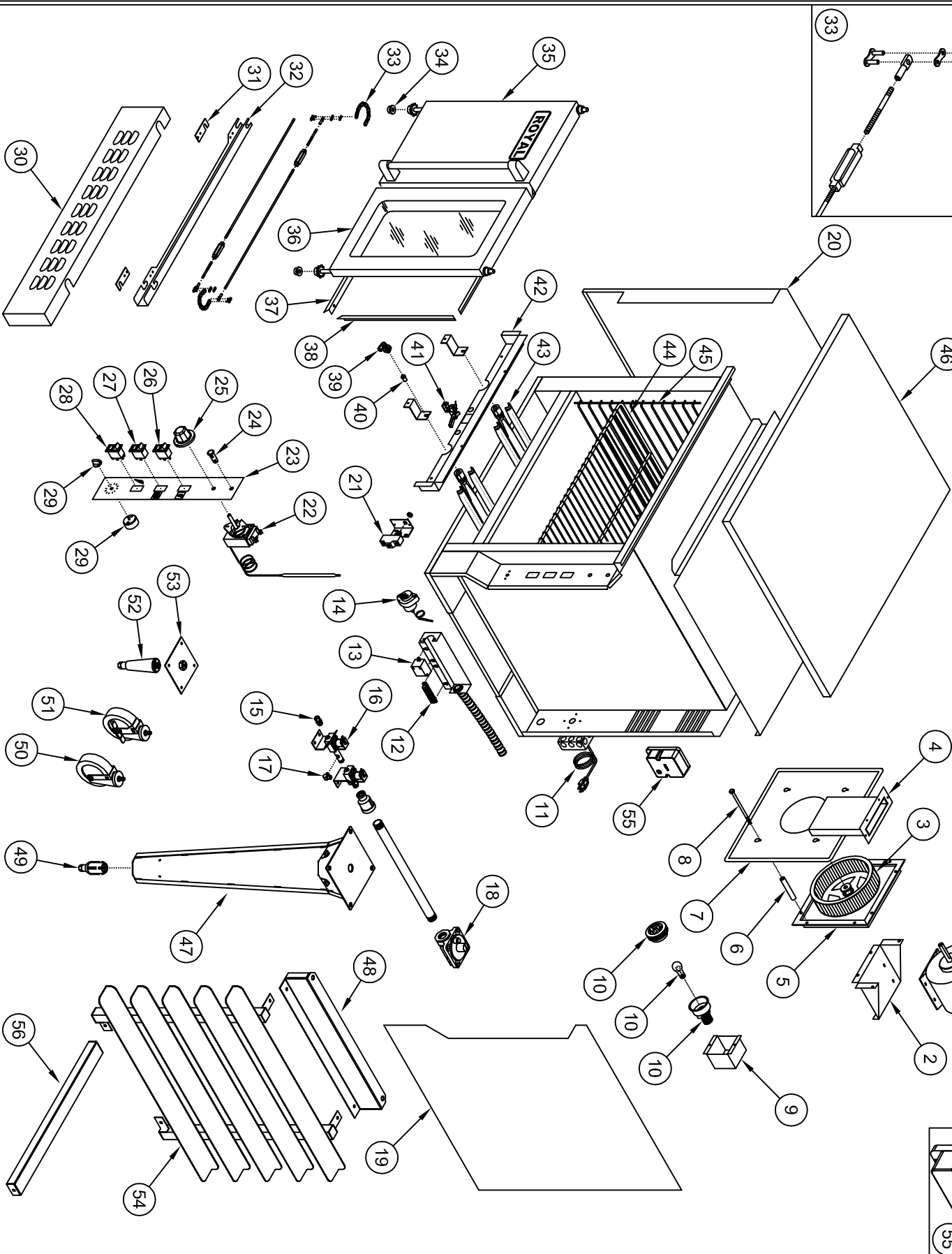


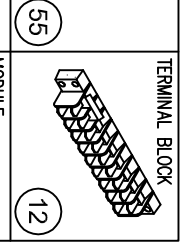
CHAIN ASSEMBLY
(COMPLETE)



RCO - SERIES Convection Oven

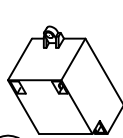


RAM-4 MODULE

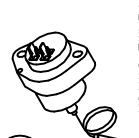


TERMINAL BLOCK

MODULE



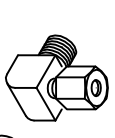
FLAME SWITCH



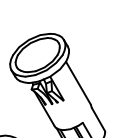
STRAIGHT FITTING



90° BRASS FITTING



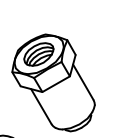
INDICATOR LIGHT



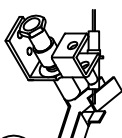
ORIFICE ELBOW



ORIFICE HOOD



PILOT OVEN



55

12

13

14

15

17

24

39

40

41

RCO - Series

Convection oven

ITEM NO.	PART NO.	DESCRIPTION
1	2500	Motor
2	30574	Motor bracket
3	2502	Blower
4	30601	Snorkel tube weld assy.
5	30602	Motor mount weld assy.
6	2505	Blower spacer tube
7	30519	Blower baffle cover
8	2507	Shoulder bolt (1/4-20 x 4")
9	30585 30586	Light bulb cover R/H Light bulb cover L/H
10	2509	Light bulb (complete set)
11	2510	Power cord 6'
12	2511	Terminal block
13	2512	Spark module
14	2513	Flame switch
15	2514	Straight fitting (3/8 CC x 3/8 NPT)
16	2515	Solenoid valve
17	2516	Brass fitting - 1/4 CC x 1/8 NPT x 90°
18	1618 1619	Gas pressure regulator (natural gas) Gas pressure regulator (propane Gas)
19	30513 30514	Side panel – Right access Side panel – Right rear
20	30515	Side panel – Left side
21	2519	Door switch
22	2520	Thermostat
23	2521	Control panel decal
24	2522	Indicator light
25	2523	Thermostat dial
26	2524	Switch, momentary oven lights
27	2525	Switch, oven fan High/Low
28	2526	Switch, power – 3 position
29	2527	Timer – knob & manual timer
30	2528	Kick plate
31	30517	Bushing holder (door lock-in bracket)
32	30536	Channel sprocket support
33	2531	Chain assembly (complete set)
34	2532	Bushing (1/2 I.D. X 5/8 O.D.)
35	30606	Door assembly – Left side
36	30605	Door assembly – Right side

RCO Convection oven

Cont'd

ITEM NO.	PART NO.	DESCRIPTION
35	30606	Door assembly – Left Side
36	30605	Door assembly – Right Side
37	30538	Door gasket (top & bottom)
38	30539	Door gasket (sides)
39	1508	Orifice elbow (3/8 CC x 3/8-27)
40	1121-33 1122-49 1121-36 1122-50	Orifice hood # 33 (brass) natural gas 40,000 BTU. For RCOD Orifice hood # 49 (brass) propane gas 40,000 BTU. For RCOD For RCOS Orifice hood # 36 (brass) natural gas 35,000 BTU. For RCOS Orifice hood # 50 (brass) propane gas 35,000 BTU
41	2537 2538	Oven pilot – natural gas Oven pilot – propane gas
42	30566	Oven front baffle
43	2611 2610	“U” burner – 40,000 BTU. For RCOS “U” burner – 35,000 BTU.
44	2540 2545	Oven rack for RCOD Oven rack for RCOS
45	2542 2543 2544	Oven rack guide – right side for RCOD Oven rack guide – left side for RCOD Oven rack guides for RCOS
46	30573 30667	Oven top liner for RCOD Oven top liner for RCOS
47	30589	Leg – single unit (Complete set of 4)
48	30682 30683	Brace for Pan Rack Assy. RCOS Brace for Pan Rack Assy. RCOD
49	1214	Adjustable bullet feet (one piece only)
50	2547 2548	Caster 5” w/out brake plate mounting for RCO-2 (double stack) Caster w/out brake plate mounting for RCO-2 (double stack)
51	2551 2552	Caster 5” with brake stem mounting for RCO-1 (single deck) Caster with brake stem mounting for RCO-1 (single deck)
52	2549	6” leg (for double unit only)
53	30607	Leg plate (for 6” leg only)
54	30689	Pan Rack Guide Assy.
55	5853	RAM-4 Spark Module
56	30685	Cross Bar for Pan Rack